

HUNT RETURN FORM REFERENCE GUIDE



PROPERTY NAME		REGISTERED NUMBER		DISTRICT	
GPS LOCATION OF PROPERTY				PERMIT NUMBER	

	LAND OWNER	HUNTING OUTFITTER	PROFFESIONAL HUNTER
NAME AND SURNAME			
CELLULAR NUMBER			
LANDLINE			
EMAIL ADDRESS			

1. HUNT START DATE: 2. MINIMUM NUMBER OF DAYS BOOKED BY CLIENT FOR LEOPARD HUNT:

3. WAS THE HUNT SUCCESSFUL?

YES	NO
-----	----

IF NO, WHY NOT?

4. PRE-BAITING (*were baits deployed before the hunt started with the client*):

YES	NO
-----	----

5. NUMBER OF BAIT SITES USED DURING HUNT (including pre-baiting if applicable):

6. NUMBER OF BAIT SITES FED ON BY LEOPARD (including pre-baiting if applicable):

7. TOTAL NUMBER OF BAIT NIGHTS (including pre-baiting if applicable):
The total number of nights that all bait sites were open (e.g. if 6 bait sites were open for 1 night = 6 bait nights)

8. TOTAL NUMBER OF BAITS USED (including pre-baiting if applicable):
The total number of times that bait sites were 'freshened' with new bait

9.

SEX & AGE OF LEOPARD FEEDING ON BAITS DURING HUNT:	NUMBER:	EVIDENCE (SIGHTING, TRACKS, TRAIL-CAMERA):
Adult male		
Adult female		
Subadult male		
Subadult female		
Juvenile		
Unknown		

Ensure all data are accurate and no blank spaces are left. Page 1 must be completed even if a leopard hunt was unsuccessful. Ensure GPS coordinates are provided throughout.

USE THIS REFERENCE GUIDE IN THE FIELD, THEN COMPLETE THE HUNT RETURN FORM ONLINE (WWW.SALEOPARDHUNTING.COM)

IF A TROPHY WAS TAKEN:

10. NUMBER OF DAYS INTO HUNT TROPHY TAKEN:

11. GPS LOCATION OF HUNT:

12. SEX:

MALE	FEMALE
------	--------

MEASUREMENTS (take note of the units; MM):

13. BODY LENGTH (MM):

14. SHOULDER HEIGHT (MM):

15. NECK CIRCUMFERENCE (MM):

16. SKULL LENGTH (MM):

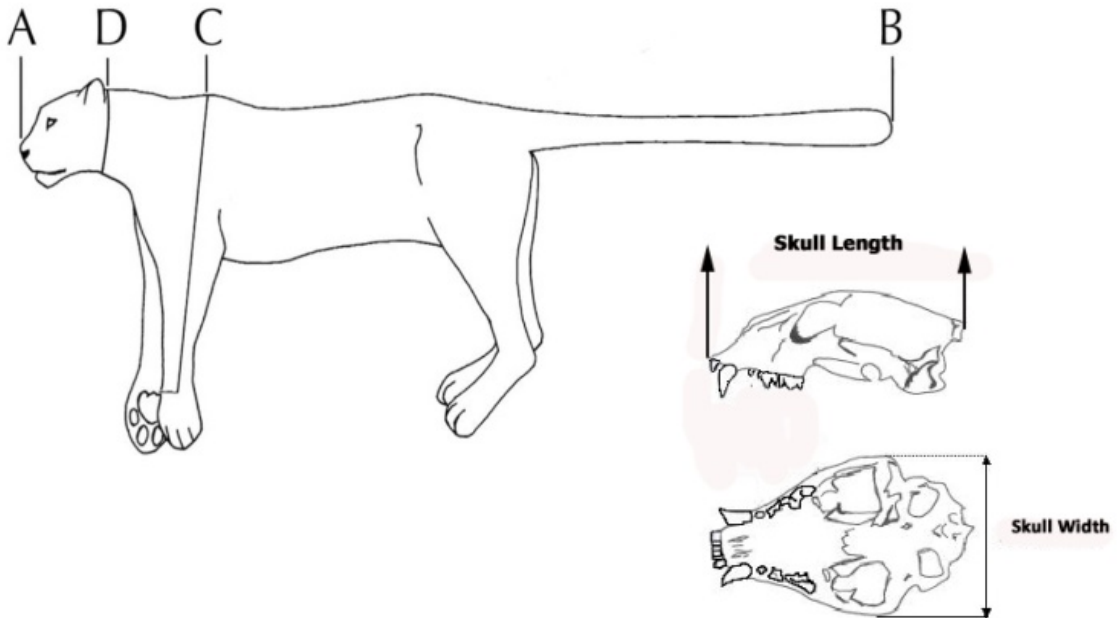
17. SKULL WIDTH (MM):

18. WEIGHT (KG):

MEASUREMENT GUIDELINES

Measurements to be taken:

- 13. Body length (mm, tip of nose to tip of tail; Measurement A–B)
- 14. Shoulder height (mm, tip of scapula to back of plantar pad; Measurement C)
- 15. Neck circumference (mm, immediately behind the ear; Measurement D)
- 16. Skull length (mm, greatest length of skull, measured as a straight line between pegs)
- 17. Skull width (mm, greatest width of skull, measured across zygomatic arches)
- 18. Weight (kg, weight of leopard)



Ensure all data are accurate and no blank spaces are left. Page 1 must be completed even if a leopard hunt was unsuccessful. Ensure GPS coordinates are provided throughout.

USE THIS REFERENCE GUIDE IN THE FIELD, THEN COMPLETE THE HUNT RETURN FORM ONLINE (WWW.SALEOPARDHUNTING.COM)

**High-quality colour photographs required before the trophy is skinned:
(ALL PHOTOGRAPHS MUST BE UPLOADED ONLINE)**



1. Side view showing the entire body with the hunter positioned directly behind for scale. Useful for assessing body size and condition.



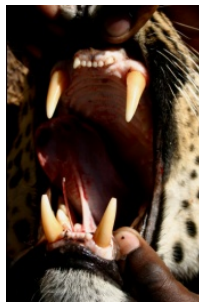
2. Side view of the head (which must be lifted) and shoulders, showing neck circumference and dewlap development.



3. Frontal view of the face showing the condition and position of the ears, and facial scarring.



4. Close up of the nose clearly showing the pigmentation.



5. Frontal view of the teeth showing coloration and wear on the canines and incisors.



6. Hindquarters clearly showing the presence or absence of a scrotum.

**High-quality colour photographs required from the cleaned skull:
(ALL PHOTOGRAPHS MUST BE UPLOADED ONLINE)**



7. Lower jaw showing all the teeth and chipping of the enamel ridge on the back of the canines.



8. Upper jaw showing all the teeth and chipping of the enamel ridge on the back of the canines.



9: Side view of the lower jaw (either side) showing the canine and wear on the cusps of molars and premolars.



10. Wide shot of all the teeth showing wear, broken teeth, and teeth coloration.

Ensure all data are accurate and no blank spaces are left. Page 1 must be completed even if a leopard hunt was unsuccessful. Ensure GPS coordinates are provided throughout.

**USE THIS REFERENCE GUIDE IN THE FIELD, THEN COMPLETE THE HUNT RETURN FORM ONLINE
(WWW.SALEOPARDHUNTING.COM)**